

12 Month Limited Warranty

Audiovox Electronics Corporation (the company) warrants to the original purchaser of this product that should this product or any part thereof, under normal use and conditions, be proven defective in material or workmanship within 12 months from the date of original purchase, such defect(s) will be repaired or replaced with reconditioned product (at the company's option) without charge for parts and repair labor. To obtain repair or replacement within the terms of this warranty, the product along with any accessories included in the original packaging is to be delivered with proof of warranty coverage (e.g. dated bill of sale), specification of the defect(s), transportation prepaid, to the company at the address shown below. DO NOT RETURN THIS PRODUCT TO THE RETAILER.

The warranty does not extend to costs incurred for the installation, removal or reinstallation of the product.

The warranty does not apply to any product or part thereof which, in the opinion of the company, has suffered or been damaged through alteration, improper installation, mishandling, misuse, neglect, accident, or by removal or defacement of the factory serial number/bar code label(s). THE EXTENT OF THE COMPANY'S LIABILITY UNDER THIS WARRANTY IS LIMITED TO THE REPAIR OR REPLACEMENT PROVIDED ABOVE AND, IN NO EVENT, SHALL THE COMPANY'S LIABILITY EXCEED THE PURCHASE PRICE PAID BY PURCHASER FOR THE PRODUCT.

This warranty is in lieu of all other express warranties or liabilities. ANY IMPLIED WARRANTIES, INCLUDING ANY IMPLIED WARRANTY OF MERCHANTABILITY, SHALL BE LIMITED TO THE DURATION OF THIS WARRANTY. ANY ACTION FOR BREACH OF ANY WARRANTY HERUNDER INCLUDING ANY IMPLIED WARRANTY OF MERCHANTABILITY MUST BE BROUGHT WITHIN A PERIOD OF 18 MONTHS FROM DATE OF ORIGINAL PURCHASE. IN NO CASE SHALL THE COMPANY BE LIABLE FOR ANY CONSEQUENTIAL OR INCIDENTAL DAMAGES FOR BREACH OF THIS OR ANY OTHER WARRANTY. No person or representative is authorized to assume for the Company any liability other than expressed herein in connection with the sale of this product.

Some states do not allow limitations on how long an implied warranty lasts or the exclusion or limitation if incidental or consequential damage so the above limitations or exclusions may not apply to you. This warranty gives you specific legal rights and you may also have other rights that vary from state to state.

For customer service and technical information:: 1.800.290.6650

TERK and the TERK logo are registered trademarks of AUDIOVOX Corp.
Audiovox Electronics Corporation, 150 Marcus Blvd., Hauppauge, NY 11788



For Customer Service
Visit Our Website At
www.terk.com
Product Information, Photos,
FAQ's, Owner's Manuals

58P008B

TV5 OWNER'S MANUAL



TV5
Indoor Amplified Television Antenna

TERK



TV5

About Your TERK TV5

Thank you for choosing the TERK TV5. TERK antennas are designed to help deliver sharp, clear video reception. Our engineering department is dedicated to designing antennas that enhance both the latest technology and the aesthetics of any viewing environment. The TV5 installs in minutes, is easy to use and simple to adjust. Before using your antenna, please remove all parts from the box and read the owner's manual carefully.

Amplified Indoor Antenna:

The TV5 features a fully adjustable, low-noise amplifier, that is designed to optimize signal strength for any location. TERK's patented amplifier bypass allows stronger local stations to bypass the amplifier entirely, preventing overmodulation and ensuring successful reception of the maximum number of available channels.

Built-In Video Selector Switch:

The TV5 offers the added convenience of a built-in video selector switch, creating a one cable solution for a video game, DVD player, VCR or other video component. With just a push of a button, you can now switch between TV and another video source without having to disconnect and reconnect any wires.

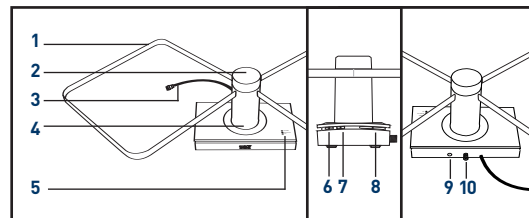
NOTE: Some video sources may require additional equipment due to incompatible outputs. One of TERK's Modulators will allow these components (DVDs, video games, etc.) that have RCA outputs, to be connected to your TV5.

1



TV5

Assembly And Installing Your TV5



- | | |
|-----------------------------------|----------------------------|
| 1. Receiving Elements | 6. Amplifier On/Off Switch |
| 2. Center Cap | 7. Video Selector Switch |
| 3. Coaxial Cable | 8. Amplifier Adjust |
| 4. Center Control Arm | 9. DC Power Input |
| 5. Antenna/Video Power Indicators | 10. Video Input |

Assembly:

Assembly of your TV5 is easy. Simply insert the receiving elements into the center control arm and hand-screw the center cap, making sure you have a snug fit.

See Fig 1.

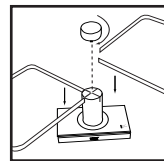


Fig. 1

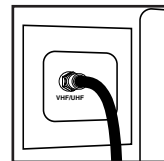


Fig. 2

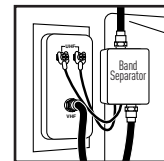


Fig. 3

2



Installation (continued)

TV5

Connecting your TV5

There are two ways to connect your TV5. This will depend on your model of television.

For Televisions with One 75 Ohm Input for VHF and UHF:

1. Connect the coaxial cable from your TV5 to the "F" connector input marked VHF/UHF on your TV.

See Fig 2.

For Televisions with Separate 75 Ohm VHF and UHF Inputs:

1. Attach the band separator (not included) to the coaxial cable attached to the back of your TV5.
2. Screw in the VHF connector from the band separator to the VHF input on your TV or VCR.
3. Attach the 300 ohm twin wire from the band separator to the two screws marked UHF. See Fig 3.

Powering your TV5

Attach the AC adaptor (included) to the DC input on the rear of your TV5. Plug the other end of the adaptor into any 12 volt AC outlet.

3



Operating Your TERK TV5 Low-Profile Indoor Amplified Antenna

TV5

For VHF and UHF:

1. Switch video selector switch to "Antenna".
2. Tune your TV to the desired station.
3. Holding the top of the center control arm, simply rotate the antenna to seek the best quality picture.
4. Adjust the "amplification" slider for the best picture and sound

For Video Games and Other Video Components:

1. Attach the coaxial cable from your satellite, cable, or video game adapter to the video input on your TV5. Ensure a tight fit to avoid interference.
2. Switch the video selector switch to "Video" for operation.
3. To connect a DVD player, VCR or video game system to a television that is not equipped with A/V jacks, you will need to obtain one of TERK's RF modulators.

4



TV5

Operating Your TV5 (continued)

Please Note:

1. Do not force the center control arm past its normal rotation positions.
2. Do not place your TV5 near large metal objects or appliances that would create interference.
2. Do not lift your TV5 by its receiving elements or place objects on them.
4. Late model televisions have on-screen menu controls for viewing VHF/UHF "Off-Air" or cable broadcasts. Please ensure that this menu control is at the proper "Off-Air" position.

Locating Your TV5

Your TV5 is a precision instrument and should be placed in a location that is best for receiving TV signals. Your TV5 can be placed on top of any standard TV for ease of adjustment.

Performance Specifications

Channels:

VHF: 2-13

UHF: 14-69

Operating Bandwidth: 54 MHz to 806 MHz

Output Impedance: 75 ohms

Dimensions (with elements): 4³/₄"H x 25"W x 12"D

Amplifier Gain: VHF: 12 dB min

UHF: 6 dB min

5



TV5

Frequently Asked Questions

- Q. I have a cable ready TV. Why am I not getting any channels above 13?
- A. The tuners inside of cable ready TVs have two modes. One mode is for cable and the other mode is for antenna. When the TV is in cable mode, and you are using an antenna, you will not be able to receive any channels above 13. To fix this, simply access the menu of your TV and switch the TV from Cable/CATV mode to ANT/AIR mode.
- Q. I have my TV in a metal cabinet. Will the antenna work?
- A. Any large metal objects will prevent the antenna signal from reaching the antenna. You must place the antenna outside of or above the metal cabinet.
- Q. My home has aluminum siding/insulation. Where should I place my antenna?
- A. Place the antenna near a window to minimize interference and improve your reception.
- Q. Can I use my antenna in a basement?
- A. TV signals cannot penetrate into basement locations due to their lower elevation.

Please Note:

Other variables, which are not related to antenna performance, can effect your reception. These include distance from the source transmitting the desired station, and man-made and natural conditions.

Example: Obstacles such as buildings between the transmitting source and your antenna.

6